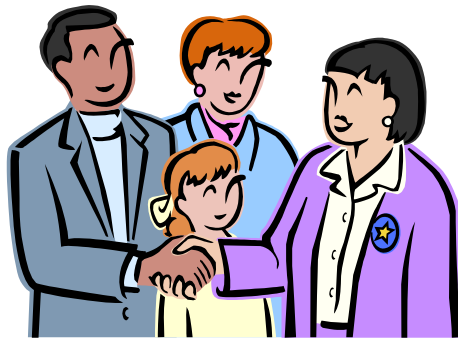


*Hartlik welkom by **LAERSKOOL LORRAINE**. Ons
nooi u vriendelik uit om te deel in al ons aktiwiteite.*

*Dit is ook ons opregte wens dat u `n baie aangename
verbintenis met hierdie skool sal hê.*

SKOOLHOOF EN PERSONEEL



*A hearty welcome to **LORRAINE PRIMARY
SCHOOL**. We would like to invite you to share in all
our activities.*

*It is also our sincere wish that your association with
our school will be a very happy one.*

PRINCIPAL AND STAFF

INHOUD

BLADSY

ONS MISSIE	4
ONS VISIE	4
SKOOLLIED	4
SKOOLWAPEN EN LEUSE	6
ONS SKOOL	6
BEHEERLIGGAAM	8
SKOOLGELD	8
DAAGLIKSE ROOSTER	10
KULTUUR	10
MEDIASENTRUM	10
SPORT	12
REKENAARSENTRUM	12
ENTREPRENEURS	14
PRE-PRIMêR (GR. R)	14
NASORGSSENTRUM	14
SKOOLKOERANT	16
SNOEPWINKEL	16
KLEREBANK	16
SKOOLDRAG	18
SKOOLREëLS	24
GEDRAGSKODE	30

CONTENTS

	<u>PAGE</u>
OUR MISSION	5
OUR VISION	5
SCHOOL SONG	5
SCHOOL BADGE AND MOTTO	7
OUR SCHOOL	7
GOVERNING BODY	9
SCHOOL FEES	9
DAILY TIME-TABLE	11
CULTURAL ACTIVITIES	11
MEDIA CENTRE	11
SPORT	13
COMPUTER CENTRE	13
ENTREPRENEURS	15
PRE-PRIMARY (GR R)	15
AFTER-CARE CENTRE	15
SCHOOL NEWSPAPER	17
TUCK SHOP	17
SWOP SHOP	17
SCHOOL UNIFORM	19
SCHOOL RULES	25
CODE OF CONDUCT	31

ONS MISSIE

Die verskaf van `n effektiewe, doeltreffende diens aan ons leerders en ouers om ons leerders te help om tot hul volle potensiaal te ontwikkel deur innoverende en doelgerigte opvoeding wat geskik is vir alle leerders en wat relevant tot hul leefwêreld is.

Erkenning van beide ouer en leerkrag as deelgenote in die totale opvoedingsproses.

Om `n positiewe leerkultuur te vestig.

VISIE

`n Dinamies, effektiewe, self-moniterende, innoverende en goedbestuurde skoolsisteem wat `n goed-gebalanseerde, leerdergesentreerde opvoeding van `n hoë kwaliteit verskaf, sodat alle leerders optimaal ontwikkel om hul voor te berei vir `n kompeterende samelewing.

SKOOLIED

Die wêreld van kennis word hier oopgesluit
Beklee word ons met durf en moed
Vir vyande sal ons nie stuit
Hier word ons siel gevoed
Ons beloof altyd ons beste te gee
Vir skool en huis en kerk
Vir Vaderland en medemens
volhard, wees altyd sterk!
Laerskool Lorraine, ons wy u die nuwe lied
Laerskool Lorraine, wat die beste vir ons bied



Skrywer: Mnr. F. Labuschagne
Komponis: ReINETTE Ferreira

OUR MISSION

The provision of an effective, efficient, service to our learners and parents in order to help our learners to develop to their full potential by means of an innovative and purposeful education which is aimed at all learners and which is relevant to their way of life.

Recognition of both parent and teacher as partners in the total educational process harmoniously and purposefully working as partners in education.

To establish a positive learning culture.

VISION

A dynamic, effective, self-monitoring, innovative and well-driven school system which provides a well balanced, top quality, learner-centred education, so that all learners develop to their optimum in order to prepare for a competitive society.

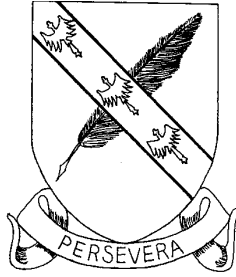
SCHOOL SONG

We're thankful for golden opportunities
That we receive here every day
We fear no dangers or adversities
Our souls will never stray
Thus we promise love and loyalty
To school and home and Lord
To Fatherland and heritage
We'll strive with one accord
May our school Lorraine for evermore be blest
That's the name Lorraine, the school that we love best

Author: Mr F. Labuschagne
Composer: ReINETTE Ferreira



SKOOLWAPEN EN LEUSE



In blou `n skuinslinks geplaaste penveer van natuurlike kleur; oor alles heen `n skuinsbalk van oranje, gesoom met goud en daarop drie adelaars in vlug.

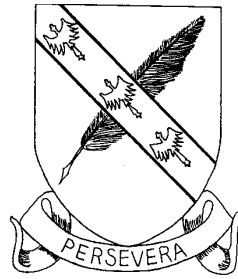
Die ontwerp van die skoolwapen is ontleen aan die wapen van die ou hertoë van Lotharingen (Ducs de Lorraine), `n provinsie in Frankryk.

Die skoolleuse **PERSEVERA** beteken **Deur Volharding**.

ONS SKOOL

Laerskool Lorraine is `n parallelmediumskool wat sy deure in 1944 geopen het, met mnr. J.G. Kilian as die eerste skoolhoof. In 1973 neem mnr. D.R.D. van Rooyen die leisels oor by mnr. Kilian tot en met sy aftrede in 1995. Mnr. C.R. van Schalkwyk, wat tans hoof is, is in Januarie 1996 aangestel.

SCHOOL BADGE AND MOTTO



A blue badge with a quill feather in a neutral colour placed on it in a slanting position from bottom left to top right. Superimposed on this and lying diagonally in the opposite direction, is an orange band, edged with gold on which there are three noble eagles in flight.

The design of the school badge is derived from the coat of arms of the old dukes of Lotharingen (Ducs de Lorraine), a province in France.

Our motto **PERSEVERA** means **Through Perseverance**.

OUR SCHOOL

Lorraine Primary School is a parallel medium school which opened its doors in 1944 with Mr J.G. Kilian as the first principal. Mr D.R.D. van Rooyen was appointed in 1973 and retired in 1995. Our present principal, Mr C.R. van Schalkwyk, was appointed in January 1996.



BEHEERLIGGAAM

Die Beheerliggaam bestaan uit 11 lede wat elke drie jaar verkies word. Die samestelling is as volg:

- Die Skoolhoof
- 6 lede van die ouergemeenskap
- 3 lede van die onderwyspersoneel
- 1 lid van die administratiewe personeel

Die belangrikste funksies van die Beheerliggaam:

1. Algemene toesighouding oor die skool, geboue, gronde en leerders.
2. Beheer oor die skoolgelde.
3. Ondersteun die skoolhoof en personeel in die uitvoering van hul professionele take.
4. Maak aanbevelings aan die Onderwyshoof in verband met die aanstelling van personeel.
5. Bevorder die belange van die skool.

SKOOLGELD

1. **Skoolgeld** is verpligtend en elke ouer is verantwoordelik vir die betaling van sy/haar kind(ers) se skoolgeld.
2. **Skryfboeke** word deur die boekkamer aan u beskikbaar gestel. Die besluit om die boeke goedkoper aan ons ouers te verskaf is geneem omdat ons beseft dat die winkels redelik duur is. Pryse word jaarliks hersien.



GOVERNING BODY

The Governing Body consists of 11 members who are elected every three years. They are:

- The Principal
- 6 members of the parent body
- 3 members of the teaching staff
- 1 member of the administrative staff

The most important functions of the Governing Body:

1. General supervision of the well-being of the school, its buildings, grounds and learners.
2. Control of the school funds.
3. Supports the principal and staff of the school in the performance of their professional functions.
4. Make recommendations to the Head of Department in connection with the appointment of staff members.
5. Promote the best interests of the school.

SCHOOL FEES

1. **School fees** are compulsory and each parent is responsible for the payment of his/her child's school fees.
2. **Exercise Books** are available to parents through the bookroom. This facility has been created to help parents buy the books at a very reasonable price, as the books in the shops are fairly expensive. Prices are reviewed annually.



DAAGLIKSE ROOSTER



Die skool begin om 08:00 en sluit om 13:00 vir die gr. R, gr. 1 en gr. 2 leerders en om 14:00 vir die leerders in gr. 3 - 7. Eerste pouse is vanaf 10:00 - 10:20 en tweede pouse vanaf 12:00 - 12:20. Op Vrydae sluit die skool om 12:50. Daar is nie 'n tweede pouse op Vrydae nie.

Sport begin net na skool. 'n Sportrooster word aan die begin van die somerkwartaal en weer aan die begin van die winterkwartaal aan leerders uitgereik.

KULTUUR

Junior koor, Senior koor, Blaasorkes, Orff-orke, Christenleerdervereniging en Kuns. Individuele onderrig in klavier, blokfluit, dwarsfluit, klarinet, koperblaas- en perkussie-instrumente.

MEDIASENTRUM

Ons beskik oor 'n ten volle toegeruste mediasentrum met 'n wye verskeidenheid inligting vir leerders in 'n primêre skool.

Ons is trots op ons uitstekende seleksie van fiksie met die nuutste boeke wat aangekoop word sodra voorraad in Port Elizabeth beskikbaar is.

Media monitors word gekies op grond van hul eerlike belangstelling in boeke.

Die mediasentrum is op Maandae, Dinsdae, Donderdae en Vrydae gedurende pouse oop, sowel as 3 namiddae per week.

Dit is vir ons belangrik dat die liefde vir lees reeds van 'n baie vroeë ouderdom by ons leerders gekweek word.

DAILY TIME-TABLE

The school starts at 08:00 and closes at 13:00 for the Grade R, Grade 1 and 2 learners, and at 14:00 for the Grade 3 - 7 learners. First break is from 10:00 - 10:20 and second break from 12:00 - 12:20. On Fridays the school closes at 12:50. There is no second break on Fridays.

Sport commences straight after school. A sports time-table is handed out to learners at the beginning of the summer season and again at the start of the winter season.

CULTURAL ACTIVITIES

Junior Choir, Senior Choir, Wind Band, Orff Orchestra, Scripture Union, and Art. Individual tuition in piano, recorder, flute, clarinet, brass and percussion instruments.

MEDIA CENTRE

We have a fully equipped media centre covering a wide range of information for learners in a primary school.



We pride ourselves by having a wonderful selection of fiction with the latest titles being purchased as soon as stock becomes available in Port Elizabeth.

Media monitors are chosen on the basis of their genuine interest in books.

The media centre is open at break time on Mondays, Tuesdays, Thursdays and Fridays and 3 afternoons a week.

The love of reading needs to be instilled in all learners from a very early age.

SPORT

SEUNS

Atletiek
Fietsry
Hokkie
Karate (Privaat)
Krieket
Landloop
Mini-Krieket
Mini-Tennis
Rugby
Skaak
Swem
Tennis

MEISIES

Atletiek
Fietsry
Hokkie
Karate (Privaat)
Landloop
Mini-Hokkie
Mini-Tennis
Netbal
Skaak
Swem
Tennis



Professionele afrigting in sekere sportsoorte word ook aangebied.

REKENAARSENTRUM

Daar is 24 rekenaars waarop die leerders kan werk. Formele rekenaarklasse begin in gr. 4 en sluit die onderrig van Microsoft Office programme soos Excel, Word en Powerpoint in. Leerders kan ook die rekenaars vir hul eie navorsing ten opsigte van take, wat hoofsaaklik op Encarta gedoen word, gebruik. Die internet is ook beskikbaar, maar mag slegs onder toesig gebruik word.

Die skool het ook die Cami Wiskunde-program aangekoop en sekere periodes word gebruik om Cami Wiskunde met die klasse te doen. Personeel word aangemoedig om hul klasse na die sentrum te bring vir navorsing oor spesifieke take of opdragte, wanneer die sentrum nie gebruik word nie.

SPORT

BOYS

Athletics
Chess
Cricket
Cross Country
Cycling
Hockey
Karate (Private)
Mini-Cricket
Mini-Tennis
Rugby
Swimming
Tennis

GIRLS

Athletics
Chess
Cross Country
Cycling
Hockey
Judo (Private)
Mini-Hockey
Mini-Tennis
Swimming
Tennis
Mini-Tennis

Professional coaching in certain sports is also available.



COMPUTER CENTRE

The computer centre has 24 computers on which the learners can work. Normal computer classes start in Grade 4 and these lessons include studying all Microsoft Office programmes such as Excel, Word and Powerpoint, Learners may also use the computers for their own research for tasks which are done mainly on Encarta. The internet is also available, but may only be used under supervision.

As the school has also bought the Mathematics programme, Cami, certain periods are put aside to do Cami Maths with the classes. When the computer centre is free, all staff are encouraged to bring their classes to the centre to do research for particular tasks or assignments.



ENTREPRENEURS

Lidmaatskap is oop vir enige graad 5 - 7 leerders. Vir sekere geleenthede word markdae gehou. Die doelwit is om die klublede te leer om vir hulleself te werk, hul eie geld te verdien en te spaar en om kreatief en kompetierend in die besigheidswêreld te wees. Ons help hulle ook om sukses en mislukking te kan hanteer.

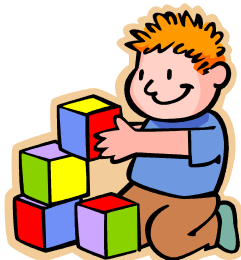
PRE-PRIMÊR (GR. R)

’n Deeglik beplande daaglikse roetine wat die volgende insluit, word gevolg: ’n oggendkring met ’n Bybelstorie en ’n bespreking van die tema van die week, skeppende aktiwiteite, musiek, beweging en vryspel. Uitstappies wat met die tema korreleer, word gereeld onderneem. Daar word deurentyd gepoog om leerders te lei om vaardighede vir graad 1 te bemeester.



NASORGSENTRUM

Daar is ’n nasorgsentrum op die skoolperseel waar leerders dit geniet om huiswerk te doen en te speel. Ons daaglikse videovertonings is baie populêr. Die sentrum is oop vanaf 13:00 - 17:30 op Maandae tot Donderdae en vanaf 13:00 - 17:00 op Vrydae.



ENTREPRENEURS

Membership is open for any Grade 5 - 7 learners. Market days are held for special occasions. The aim is to teach the members of the club to work for themselves, to earn their own money, to save money and to be creative and competitive in the business world. They are also helped to deal with success and failure.

PRE-PRIMARY (GR R)

A thoroughly planned daily routine is followed. It includes a morning ring with a Bible story and a discussion on the theme of the week, creative activities, music, movement and free play. Learners regularly go on theme correlated excursions. Learners are continually led to master the skills necessary for Grade 1.

AFTER-CARE CENTRE

We have an after-care centre on the school premises where learners enjoy doing homework and playing. Our daily showing of videos has proved very popular. The centre is open from Monday to Thursday from 13:00 - 17:30 and on Fridays from 13:00 - 17:00.



SKOOLKOERANT



Ons skoolkoerant, Kiewietjie, wie se redaksie uit leerders en onderwysers bestaan, word self geskryf en gedruk en verskyn twee keer per jaar. Dit bestaan uit 'n fotoblad met nuusgebeure wat skoolaktiwiteite weerspieël.

SNOEPWINKEL

Standaard items soos skyfies, lekkers en koeldrank word te koop aangebied terwyl daar elke dag `n warm versnapering voorberei word.

Winkelure	:	Voor skool	:	07:15 - 08:00
		Eerste en tweede pouse		
		Na skool	:	14:00 - 14:30

KLEREBANK

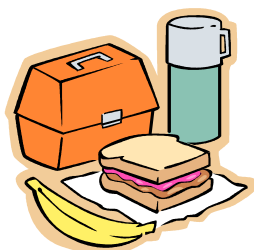
Die skool bedryf `n ruilwinkel waar ouers tweedehandse skooldrag kan bekom. Ouers word ook aangemoedig om kledingstukke wat te klein geword het, of nie meer benodig word nie, aan die ruilwinkel te skenk of dit deur die ruilwinkel te verkoop.

Winkelure gedurende die skoolkwartaal:

Maandae	:	14:00 - 14:30
Dinsdae	:	07:30 - 08:00
Donderdae	:	07:30 - 08:00

SCHOOL NEWSPAPER

Our school newspaper, “Kiewietjie”, whose editorial comprises of learners and teachers, is written, printed and appears twice per year. It contains a selection of photographs with an overview of school activities and happenings.



TUCK SHOP

Standard fare like chips, sweets and cold drinks are on offer and a hot snack is prepared daily.

Shop hours : Before school : 07:15 - 08:00
First and second break
After school : 14:00 - 14:30

SWOP SHOP

The school runs a swop shop, where parents can obtain second hand clothing for their children. Parents are also encouraged to donate articles of school clothing to the swop shop or to sell them through the swop shop.

Shopping hours during the school term:

Mondays : 14:00 - 14:30
Tuesdays : 07:30 - 08:00
Thursdays : 07:30 - 08:00

SKOOLDRAG

Verskaffers: Schultz Uitrusters, Weststraat, Newtonpark
Birch's, 2de Laan, Newtonpark

Seuns

Somer:

Wit kortmouhemp met sakwapen
(Sakwapen by skool beskikbaar)
Grys kort- of langbroek
Grys skoolkouse
Swart skoene
Skooltrui
Skoolbaadjie)

Winter:

Wit toeknoophemp
Skooldas
Grys kort- of langbroek
Grys skoolkouse
Swart skoolskoene
Skoolbaadjie
Skooltrui

Meisies

Lorraine skoolrok
Swart skoene
Kort wit kouse
Lorraine skoolbroekie
Skooltrui
Skoolbaadjie

Lorraine skoolrok
Swart skoene
Lorraine skoolbroekie
Skoolbaadjie
Skooltrui
Grys Lorraine skoolkouse
of grys broekiekouse

**Die skoolbaadjie is verpligtend en moet tydens
saalbyeenkomste gedra word.**

Seuns

Rugby:

Lorraine rugbytrui
Wit broekie
Speel kaalvoet

Meisies

Netbal:

Lorraine sporthemp
Lorraine netbalromp
Kort wit kouse
Wit hardloopskoene

SCHOOL UNIFORM

Suppliers:

Schultz Outfitters, West Street, Newton Park
Birch's, 2nd Avenue, Newton Park

Boys

Summer:

White short sleeved shirt with badge
(Pocket badge available at school)
Grey trousers or shorts
Grey Lorraine school socks
Black school shoes
School blazer
School jersey

Winter:

White long sleeved shirt
School tie
Grey trousers or shorts
Lorraine school socks
Black school shoes
School blazer
School jersey

Girls

Lorraine school dress
Black shoes
White socks
Blue school panties
Lorraine school blazer
Lorraine school cardigan

Lorraine school dress
Black shoes
Blue school panties
School blazer
School jersey
Grey Lorraine school socks
or grey tights

The school blazer is compulsory and has to be worn at assemblies

Boys

Rugby:

Lorraine rugby jersey
White shorts
Play barefoot



Girls

Netball:

Lorraine sports shirt
Lorraine netball skirt
Short white socks
White running shoes

Beginners Rugby:

Rugby T-hemp (by skool beskikbaar)
Wit broekie

Beginners Netbal:

Lorraine sporthemp
Kort wit broekie
Kort wit kouse
Wit hardloopskoene

Tennis:

Lorraine sporthemp en kort broekie
Kort wit kouse
Tennisskoene

Tennis:

Lorraine sporthemp en
romp
Kort wit kouse
Tennisskoene

Tennisspan:

Lorraine sporthemp
Kort wit broekie
Kort wit kouse
Tennisskoene

Tennisspan:

Lorraine sporthemp
Blou Lorraine netbal-
romp of wit romp
Kort wit kouse
Tennisskoene

Mini-tennis:

Lorraine sporthemp
Kort wit broekie
Kort wit kouse
Wit hardloopskoene



Mini-tennis:

Lorraine sporthemp
Wit broekie
Kort wit kouse
Wit hardloopskoene

Atletiek:

Lorraine sporthemp
Wit broekie

Atletiek:

Lorraine sporthemp
Wit broekie

Beginners Rugby:

Rugby T-shirt
(available at school)
White shorts

Beginners Netball:

Lorraine sports shirt
White shorts
Short white socks
White running shoes

Tennis:

Lorraine sports shirt and shorts
Short white socks
Tennis shoes

Tennis:

Lorraine sports shirt and skirt
Short white socks
Tennis shoes

Tennis (team):

Lorraine sports shirt
White shorts
Short white socks
Tennis shoes

Tennis (team):

Lorraine sports shirt
Blue Lorraine netball skirt or
white skirt
Short white socks
Tennis shoes

Mini-tennis:

Lorraine sports shirt
White shorts
Short white socks
White running shoes

Mini-tennis:

Lorraine sports shirt
White shorts
Short white socks
White running shoes

Athletics:

Lorraine sports shirt
White shorts

Athletics:

Lorraine sports shirt
White shorts



Krieket:

Lorraine sporthemp of
Wit skoolhemp met kort moue
Wit broek
Wit hardloopskoene
Lorraine skoolkouse
o/10A; o/11A en o/13A en B- rugbykouse

Hokkie:

Blou hokkieromp
Lorraine sporthemp
Rugbykouse
Hokkiestewels

Mini-krieket:

Lorraine sporthemp
Wit broekie
Lorraine skoolkouse
Wit hardloopskoene

Mini-hokkie:

Lorraine sporthemp
Wit broekie
Lorraine winterskoolkouse
Wit hardloopskoene

Landloop:

Lorraine sporthemp
Wit broekie
Gesikte hardloopskoene

Landloop:

Lorraine sporthemp
Wit broekie
Gesikte hardloopskoene

Swemspan:

Koningsblou Speedo of
Arena swembroek
Swempet (alle swem)

Swemspan:

Koningsblou Speedo of
Arena swembroek
Swempet (alle swem)

**Lorraine sweetpak verpligtend vir sportperiode op Dinsdae
(Slegs vir gr. 4—7)**

Graad 1- en 2-leerders benodig `n Lorraine sporthemp, wit broekie en wit hardloopskoene vir alle sport. Die skoolsweetpak is slegs verpligtend vir deelname in spanverband.

**SKOOL SPORTEMDE IS SLEGS BY DIE SKOOL
BESKIKBAAR**

Om te voorkom dat klere verlore raak, is dit noodsaaklik dat elke kledingstuk duidelik gemerk is. Ouers se samewerking word gevra deur toe te sien dat hul kinders volgens die voorgeskrewe skooldrag geklee is wanneer hulle skool toe gaan.

Cricket:

Lorraine sports shirt or
White short sleeved school shirt
White shorts
White running shoes
Lorraine school socks
u/10A; u/11 A and u/13A & B- rugby socks

Mini-Cricket:

Lorraine sports shirt
White shorts
Lorraine school socks
White running shoes

Cross Country:

Lorraine sports shirt
White shorts
Suitable running shoes

Team Swimming:

Royal blue Speedo or
Arena costume
Swimming cap

**Hockey:**

Blue hockey skirt
Lorraine sports shirt
Rugby socks
Togs

Mini-Hockey:

Lorraine sports shirt
White shorts
Lorraine winter socks
White running shoes

Cross Country:

Lorraine sports shirt
White shorts
Suitable running shoes

Team Swimming:

Royal blue Speedo or
Arena costume
Swimming cap

**Lorraine tracksuit compulsory for sports period on Tuesdays
(Gr 4—7 only)**

Grade 1 and 2 learners need a Lorraine sports shirt, white shorts and white running shoes for all their sport. The school tracksuit is only compulsory for team participation.

SCHOOL SPORTS SHIRTS ARE AVAILABLE AT SCHOOL ONLY

To prevent the loss of clothing, it is imperative that each item of school clothing is clearly marked. Parents are requested to cooperate by insisting that their children are correctly dressed in the regulation school dress detailed above, when attending school.

SKOOLREËLS

Dissipline is 'n onontbeerlike bestanddeel vir die gesonde funksionering van die skool en vir die beskerming van die individu. Elke leerder is onderhewig aan die skoolreëls en dit is daarom noodsaaklik dat ons die heelhartige ondersteuning en samewerking van ouers in hierdie verband het in belang van die skool en u kind.

Skoolreëls geld terwyl leerders op die skoolgrond is, of in hul uniform weg van die skool af en wanneer hulle die skool verteenwoordig, hetsy tuis of weg.

1. Kleredrag en voorkoms:

1.1 Skooldrag: Raadpleeg Prospektus

1.2 Sportdrag: Raadpleeg Prospektus

1.3 Voorkoms:

1.3.1 Hare moet te alle tye netjies versorg wees en nie aandag trek nie:

1.3.1.1 Leerders mag nie hul hare kleur, bleik, tint, "highlight" ens.nie.

1.3.1.2 Dit mag nie aan die kraag raak nie.

1.3.1.3 Geen "steps" in seuns se hare nie.

1.3.2 Geen naellak of grimering nie.

1.3.3 Naels mag nie verby vingerpunte wees nie.

1.3.4 Meisies mag slegs EEN stel klein ooringetjies of "studs" (goud of silwer) dra. (Onderste lel)

1.3.5 Alle haarbykomstighede (haarbande "alice bands" en rekkies) moet koningsblou ("royal blue") wees.

1.3.6 Seuns mag nie oorbelle/ "studs" dra nie.

1.3.7 Geen juweliersware – slegs horlosies en mediese ketting.

1.3.8 Meisies se rokke moet 'n aanvaarbare lengte wees.

Wanneer 'n meisie kniel, moet haar rok ± 10cm bokant die knie wees.

SCHOOL RULES

Discipline is essential for the general well-being and tone of the school and for the protection of the individual. Each learner is subject to and must abide by the set of school rules. It is imperative that in this regard we have the wholehearted support and co-operation of parents, both in the general interests of the school and, more particularly, in their own children's interests.

School rules apply while learners are on the school property, or if they are in school uniform away from school and when learners are representing the school at home or away.

1. Dress Code and Appearance:

1.1 School uniform Consult Prospectus

1.2 Sports uniform Consult Prospectus

1.3 Appearance:

1.3.1 At all times hair must be well cared for and not attract attention:

1.3.1.1 It may not be tinted, highlighted, dyed, peroxided etc.

1.3.1.2 It may not touch the collar.

1.3.1.3 No "steps" in the boys' hair.

1.3.2 No nail polish or make-up.

1.3.3 Nails may not be longer than the fingertips.

1.3.4 Girls may only wear ONE pair of small sleepers or studs (gold or silver). (Lower lobe)

1.3.5 All hair accessories must be royal blue. (Alice Bands and elastics)

1.3.6 Boys may not wear earrings/"studs".

1.3.7 No jewellery – only watches and medical chains.

1.3.8 Girls' dresses should be of an acceptable length i.e. when kneeling, the girl's dress should measure ± 10 cm above the knee.

2. **Gedrag:**

2.1 **Rye, gange en skoolgebou:**

- 2.1.1 Eerste klok - beweeg na rye
Tweede klok - geen gepraat
- 2.1.2 Leerders moet te alle tye in reguit rye stap.
- 2.1.3 Leerders mag nie in skoolgebou hardloop nie en mag ook nie trappe op- of afhardloop nie.
- 2.1.4 Geen leerders mag in die saal wees sonder die toestemming of aanwesigheid van 'n leerkrag nie.
- 2.1.5 Leerders mag slegs die hoofingang gebruik indien hulle deur 'n ouer of leerkrag vergesel word. Die skolierpatroolie mag wel die hoofingang gebruik.
- 2.1.6 Leerders moet voorkeur aan volwassenes verleen by deure.

2.2 **Skoolterrein:**

Die volgende is verbode:

- 2.2.1 Boom- of muurklim
- 2.2.2 Rommelstrooi
- 2.2.3 Oor drade of hekke klim/Onderdeur drade of hekke kruip
- 2.2.4 Fietsry of skaatsplankry
- 2.2.5 Tussen motors speel
- 2.2.6 Gevaarlike speletjies (Geen harde balle)
- 2.2.7 Geen leerders word oor naweke of gedurende vakansies sonder toestemming op die skoolterrein toegelaat nie
- 2.2.8 Leerders mag nie die skoolterrein sonder toestemming verlaat nie
- 2.2.9 Gr. 1—7 leerders mag nie op die Pre-Primêre apparaat speel nie
- 2.2.10 Leerders mag nie skoolskoene op tennis- en netbalbane dra nie

2. **Behaviour:**

2.1 **Lines, passages and school buildings:**

- 2.1.1 First bell - move to lines
Second bell - no talking
- 2.1.2 Learners must walk in straight lines at all times.
- 2.1.3 Learners may neither run in the school building nor run up or down the stairs.
- 2.1.4 No learners may go into the hall without the permission of a teacher.
- 2.1.5 No learner may use the front entrance (except scholar patrol) unless accompanied by a parent or teacher.
- 2.1.6 Learners must stand back at doors for adults.

2.2 **School grounds:**

The following are prohibited:

- 2.2.1 Climbing trees and walls
- 2.2.2 Littering
- 2.2.3 Climbing over/under fences or gates
- 2.2.4 Riding bicycles or skateboarding
- 2.2.5 Playing in between the cars
- 2.2.6 Dangerous games (No hard balls)
- 2.2.7 No learners are allowed on the school grounds over weekends or during holidays without permission
- 2.2.8 No learners are permitted to leave the school grounds without a teacher's permission
- 2.2.9 No playing on Pre-Primary apparatus by any learners from Gr 1—7
- 2.2.10 No school shoes to be worn on tennis/netball courts

3. Algemeen:

- 3.1 Die telefoon mag slegs gedurende pouses of in noodgevallen gebruik word. **Geen selfone word by die skool toegelaat nie, selfs al is dit afgeskakel.**
- 3.2 Speelgoed, diere ens. moet nie skool toe gebring word nie.
- 3.3 Oneerlikheid in enige vorm sal nie geduld word nie.
- 3.4 Rook, alkohol of verdowingsmiddels is verbode.
- 3.5 Parmantigheid, arrogansie of onhoflikheid teenoor administratiewe personeel, personeel of skoolleiers sal nie geduld word nie.
- 3.6 Kougom is verbode.
- 3.7 Vuil- of krastaal is ontoelaatbaar.
- 3.8 Bakleiery, klipgooi en afknouery word in 'n ernstige lig beskou.
- 3.9 Die sweetpakbaadjie is NIE deel van die skooluniform nie, en mag onder geen omstandighede in die plek van die skoolbaadjie of –trui gedra word nie.
- 3.10 Hardloopskoene is NIE deel van die skooluniform nie en mag onder geen omstandighede saam met die skooluniform gedra word nie.

3. General:

- 3.1 The telephone may only be used at break time or in cases of emergency. **No cellphones are allowed at school, even if they are switched off.**
- 3.2 Toys, animals etc. must not be brought to school.
- 3.3 Dishonesty in any form will not be tolerated.
- 3.4 Smoking, alcohol and drugs are prohibited.
- 3.5 Cheek (insolence), arrogance or discourtesy towards administrative staff, teachers or school leaders will not be tolerated.
- 3.6 Chewing gum is forbidden.
- 3.7 Dirty or bad language is not permitted.
- 3.8 Fighting, stone-throwing and bullying are all seen as serious offences.
- 3.9 The tracksuit top is NOT part of the school uniform and under NO circumstances may it replace the school blazer or jersey.
- 3.10 Running/Sports shoes are NOT part of the school uniform and under NO circumstances may they be worn together with the school uniform.

GEDRAGSKODE

Terwyl die klem te alle tye op selfdissipline val, bestaan daar reëls en regulasies om die hoogste moontlike standaard aan te moedig.

1. BAIE ERNSTIGE oortredings:

- 1.1 In besit of gebruik van alkohol
- 1.2 In besit of gebruik van verdowingsmiddels
- 1.3 In besit van pornografiese materiaal
- 1.4 In besit van enige wapen
- 1.5 Bakleiery
- 1.6 Diefstal
- 1.7 Rook
- 1.8 Bendes
- 1.9 Seksuele teistering
- 1.10 Vandalisme

2. ERNSTIGE oortredings:

- 2.1 Onaanvaarbare gedrag (parmantigheid, arrogansie ens.)
- 2.2 Voortdurende oortreding van klasdissipline, dragregulasies, daaglikse roetine en akademiese werk
- 2.3 Laat vir skool/klas sonder 'n geldige verskoning
- 2.4 Wegbly van skool/klasse sonder 'n geldige verskoning
- 2.5 Oneerlikheid
- 2.6 Vloek/Vuil taal
- 2.7 Klipgooi
- 2.8 Kwaadwillige rommelstrooi

CODE OF CONDUCT

While the emphasis falls on self-discipline at all times, rules and regulations exist so as to encourage standards of the highest order.

1. VERY SERIOUS offences:

- 1.1 In possession or use of alcohol
- 1.2 In possession or use of drugs
- 1.3 In possession of pornographic material
- 1.4 In possession of any weapon
- 1.5 Fighting
- 1.6 Theft
- 1.7 Smoking
- 1.8 Gangs
- 1.9 Sexual harassment
- 1.10 Vandalism

2. SERIOUS offences:

- 2.1 Unacceptable behaviour (insolence, arrogance etc.)
- 2.2 Continuous offences of class discipline, dress regulations, daily routine and academic work.
- 2.3 Late for school/class without a valid excuse
- 2.4 Absent from school/class without a valid excuse
- 2.5 Dishonesty
- 2.6 Swearing
- 2.7 Throwing stones
- 2.8 Malicious littering

3. DISSIPLINÊRE KAART:

Die volgende dissiplinêre prosedures word gevolg. **Hierdie stelsel is onderhewig aan verandering.**

GR. 2 – 3

- Aan die begin van elke week word 10 punte aan leerders toegeken.
- Elke leerder wat teen die einde van 'n kwartaal 4 punte of minder verloor het, ontvang 'n merietewapen.
- Elke leerder wat teen die einde van die skooljaar 12 punte of minder verloor het, kwalifiseer vir 'n merietewapen vir die jaar.
- Verloor 10 punte – Leerder ontvang 'n skriftelike waarskuwing.
- Verloor 20 punte – Detensie tydens pouse (4 pouses)
- Verloor 30 punte – Ouers word ontbied. Leerder ontvang finale waarskuwing.
- Verloor 40 punte – Leerder sal vir 'n periode van 5 skooldae, skoolwerk in afsondering en onder toesig doen. Alle voorregte sal verbeur word.

VERWYSINGSKODES VIR OORTREDINGS

	Claskamer			Gedrag			Reëls	
1	Huiswerksak/-boeke tuis / weg.	-1	8.	Aanhoudende gesels / spelery in die klas.	-1	20	Laat kom / rondloperij nadat 2de klok gelui het.	-1
2	Huiswerk nie geteken / gedoen nie.	-1	9.	Aanhoudende gekla en stories aandra.	-1	21	Kougom kou / eet in die klas.	-1
3	Toetse / boeke nie geteken nie.	-1	10	Swak gedrag – saal / klas / speelgronde / toilette.	-2	22	Kleredrag / hare nie volgens voorskrif nie.	-1
4	LO klere tuis vergeet.	-1	11	Algemene ongehoorsaamheid – luister nie na onderwyseres / klasleier / prefek / monitor nie.	-2	23	Strooi van rommel in klas / op speelgrond	-2
5	Afskeurstrokie nie inhandig nie.	-1	12	Steurende gedrag in die klas – maak geluide / fluit / skree uit.	-2	24	Gooi van voorwerpe in klas / op speelgrond.	-2
6	Gesels tydens afkondigings / wanneer besoeker klaskamer binnekom.	-1	13	Swak gedrag – uitdagend/parmantig / praat terug / verontagsaam instruksies.	-2	25	Rondloop / speel in gange tydens pouses en voor skool.	-2
7	Ouers se handtekening vervals.	-2	14	Beledigende taal.	-2	26	Graffiti – banke / mure / toilette.	-3
			15	Terg / koggel / beledig ander.	-2	27	Vandalisme – klaskamers /	-3

						geboue / motors	
		16	Spoeg	-2	28	Diefstal	-3
		17	Vuiltaal / tekeninge	-3	29	Skoolterrein verlaat tydens skoolure sonder toestemming.	-3
		18	Leuens / oneerlikheid	-3	30	Wegsteek / vernietiging van ander se eiendom – kosblikke / tasse ens.	-3
		19	Gebruik van fisiese geweld / bakleiery / afknouery	-3	31	Skending van ander se privaatheid – krap in tasse ens.	-3
					32	Speel van gevaarlike speletjies wat kan lei tot beserings.	-3
					33	In besit van gevaarlike speelgoed / voorwerpe.	-3

Die toepassing van straf word aan die diskresie van die onderwyseres oorgelaat in ooreenstemming met die skool se gedragskode.

HIERDIE PROSEDURES IS ONDERHEWIG AAN VERANDERING

HANDTEKENING VAN OUER / VOOG:

3. DISCIPLINARY CARD:

The following disciplinary procedures are followed. **This system is subject to change.**

GR 2 – 3

- 10 points will be awarded to each learner at the beginning of each week.
- All learners who have lost 4 points or less at the end of each term will receive a merit badge.
- All learners who have lost 12 points or less by the end of the year will qualify for a merit badge for the year.
- Loses 10 points – Learner receives a written warning.
- Loses 20 points – Detention during break (4 breaks)
- Loses 30 points – Parents are called in. Learner receives a final warning.
- Loses 40 points – Learner will do supervised schoolwork in isolation for 5 school days and all privileges will be withdrawn.

REFERENCE CODES FOR TRANSGRESSIONS

	Classroom			Behaviour			Rules	
1.	Homework bag / books at home/lost.	-1	8.	Continuous talking / playing in class.	-1	20.	Arrives late / walking around after 2 nd bell has rung.	-1
2.	Homework not done / not signed.	-1	9.	Constant nagging / telling tales.	-1	21.	Chewing bubblegum / eating in class	-1
3.	Tests / books not signed.	-1	10.	Poor behaviour – hall / class / school grounds / toilets	-2	22.	Clothing / hair not worn according to dress code.	-1
4.	Phys Ed clothes not brought to school.	-1	11.	General poor behaviour – does not listen to teacher / class leader / prefect / monitor.	-2	23.	Littering in class / on school grounds.	-2
5.	Reply slips not returned.	-1	12.	Disruptive behaviour in class – makes noises / whistles / excessive talking / shouting out.	-2	24.	Throwing objects in class / on playground.	-2
6.	Talking while there is a visitor / other teacher in class / during announcements.	-1	13.	Poor behaviour – defiant/ uncooperative attitude / back chatting / disregards instructions.	-2	25.	Walking around / playing in passages during breaks and before school.	-2
7.	Forging parents' signature	-2	14.	Derogatory speech.	-2	26.	Graffiti – desks / walls / toilets	-3
			15.	Teasing / belittling	-2	27.	Vandalism –	-3

				of others.			classrooms buildings / cars	
			16.	Spitting	-2	28.	Stealing	-3
			17.	Crude / inappropriate language / drawings	-3	29.	Leaving school grounds during school hours without permission.	-3
			18.	Lying / dishonesty	-3	30.	Hiding / destruction of others' property – lunch tins / school bags etc.	-3
			19.	Physical violence / fighting / bullying	-3	31.	Intrusion of privacy – tamper with bags / personal possessions.	-3
						32.	Playing dangerous games that can lead to injury.	-3
						33.	In possession of dangerous toys / objects.	-3

The applicable punishment is left to the teacher's discretion in accordance with the school's code of conduct.

THESE PROCEDURES ARE SUBJECT TO CHANGE.

SIGNATURE OF PARENT / GUARDIAN:

GR. 4 - 7

MERIETE / DISSIPLINÊRE KAART

<u>100 punte</u>	Aan die begin van die jaar aan elke leerder toegeken.
<u>150 punte</u>	Leerder ontvang 'n merietewapen. (Nr.1)
<u>180 punte</u>	Leerder ontvang 'n merietewapen. (Nr.2 - Hertoekenning)
<u>210 punte</u>	Leerder ontvang 'n merietewapen. (Nr.3 - Hertoekenning)
<u>240 punte</u> +	Leerder kwalifiseer vir 'n MERIETEWAPEN vir die jaar.

Bostaande punte sal varieer van jaar tot jaar, afhange van die aantal weke in 'n spesifieke kwartaal.

OORTREDINGS

<u>80 punte</u>	Leerder kry 'n skriftelike waarskuwing.
<u>70 punte</u>	Pouse Detensie. (4 pouses)
<u>60 punte</u>	Pouse Detensie. (9 pouses)
<u>50 punte</u>	Ouers word ontbied. Pouse Detensie. (18 pouses)
<u>40 punte</u>	Leerder sal vir 'n periode van 5 skooldae, skoolwerk in afsondering en onder toesig doen. Alle voorregte sal verbeur word.

Die klasonderwyser en ouer sal elke tweede week die kaart kontroleer en teken. Indien die leerder geen oortredings begaan het nie, sal hy/sy 10 punte van die klasonderwyser ontvang.

Handtekening van Ouer/Voog:

VERWYSINGSKODES VIR OORTREDINGS

1.	Dissiplinêre kaart verloor.	- 10	21.	Spoeg / "pea shooting".	- 10
2.	Kaart nie by skool nie.	- 5	22.	Stokkiesdraai: klasse / skool.	- 10
3.	Kaart/werk nie geteken nie.	- 2	23.	Ongemagtigde gebruik van selfone, MP3-spelers, ens. – gekonfiskeer vir 8 weke.	- 10
4.	Laat vir rye, klas, skool, ens.	- 2	24.	Swak gedrag / sportmangees na skool.	- 10
5.	Rommelstrooi.	- 2	25.	Gooi van voorwerpe, bv. klippe.	- 10
6.	Gehoorzaam nie skoolreëls nie.	- 2	26.	Vloek / kras taalgebruik.	- 10
7.	Praat aanhoudend.	- 2	27.	Minagting van gesag.	- 10
8.	Werk nie in klas nie.	- 2	28.	Oneerlikheid / leuens.	- 10
9.	Boeke, skryfbehoeftes, ens. by die huis.	- 2	29.	Swak gesindheid, terugpraterij of parmantigheid, respekteer nie volwassenes nie.	- 10
10.	Werk onvoltooi / nie ingehandig nie.	- 2	30.	Swak gedrag in toilette.	- 10
11.	Swak persoonlike voorkoms bv. hare, naels, uniform, ens.	- 2	Nr. 31 – 40 sal volgens 'n glyskaal tot – 40 geassesseer word en na 'n dissiplinêre komitee verwys word vir bespreking en evaluering.		
12.	Trek nie volgens skoolreëls aan nie.	- 2	31.	Ernstige afknouery / bakleiry.	- 40
13.	Swak gedrag.	- 2	32.	Rook, of in besit van sigarette, dwelms, alkohol, of onder die invloed van alkohol.	- 40
14.	Ongehoorsaamheid.	- 2	33.	Seksuele teistering.	- 40
15.	Kou van kougom, eet en drink in klas.	- 2	34.	In besit of gebruik van 'n wapen.	- 40
16.	Vergader in areas wat buite perke is.	- 2	35.	In besit van pornografiese materiaal.	- 40
17.	Praat, raserig, ens. gedurende afkondigings.	- 2	36.	Diefstal.	- 40
18.	Toon nie respek teenoor medeleerders nie.		37.	Oneerlikheid gedurende toetse / eksamen.	- 40
19.	Sturend in klas.	- 5	38.	Vandalisme van skool of ander eiendom.	- 40
20.	Swak gedrag tydens skoolfunksies / uitstappies.	- 10	39.	Enige ander ernstige oortredings.	- 40
			40.	Gekleurde/getinte hare Onaanvaarbare haarstyle	- 40

GR 4 - 7

MERIT / DISCIPLINARY CARD

100 points

Awarded to each learner at the beginning of the year.

150 points

Learner receives a merit badge. No.1

180 points

Learner receives a merit badge. No.2 (Re-award)

210 points

Learner receives a merit badge. No.3 (Re-award)

240 points+

Learner qualifies for a MERIT BADGE for the year.

The above points may vary from year to year depending on the number of weeks in a specific term.

TRANSGRESSIONS

80 points

Learner receives a written warning.

70 points

Break Detention. (4 breaks)

60 points

Break Detention. (9 breaks)

50 points

Parents called in. Break Detention. (18 breaks)

40 points

Learner will do supervised schoolwork in isolation for 5 school days and all privileges will be withdrawn.

Every second week, the class teacher and parents will check and sign the card. If no transgressions appear on the learner's card, 10 points will be awarded by the class teacher.

Parent / Legal Guardian's signature

REFERENCE CODES FOR TRANSGRESSIONS

1.	Card lost.	- 10	21.	Spitting / pea shooting.	- 10
2.	Card not at school.	- 5	22.	Bunking classes / school.	- 10
3.	Card/work not signed.	- 2	23.	Unauthorised use of cell phones, MP3's, etc.- will be confiscated for 8 weeks.	- 10
4.	Late for lines, class, school, etc.	- 2	24.	Improper conduct after school / bad sportsmanship.	- 10
5.	Littering.	- 2	25.	Throwing objects e.g. stones, or using cattles / elastics.	- 10
6.	Not adhering to school rules.	- 2	26.	Swearing / bad language.	- 10
7.	Continuous talking.	- 2	27.	Undermining authority.	- 10
8.	Not working in class.	- 2	28.	Dishonesty / lies.	- 10
9.	Books, stationery, etc. left at home.	- 2	29.	Bad attitude, insolence, arrogance or back chatting. Disrespect for adults.	- 10
10.	Work not completed / not handed in.	- 2	30.	Poor behaviour in the toilets.	- 10
11.	Poor personal appearance e.g. hair, nails, uniform, etc.	- 2		No's 31-40 will be assessed on a sliding scale up to - 40 and referred to a disciplinary committee for discussion and evaluation.	
12.	Incorrect attire for school.	- 2	31.	Bullying / fighting	- 40
13.	Poor behaviour.	- 2	32.	Smoking or in possession of cigarettes, drugs, alcohol, or being under the influence of alcohol.	- 40
14.	Disobedience.	- 2	33.	Sexual harassment.	- 40
15.	Chewing gum, eating and drinking in class.	- 2	34.	In possession of any weapon / or using a weapon.	- 40
16.	Loitering in areas that are out of bounds.	- 2	35.	In possession of any pornographic material.	- 40
17.	Talking, being noisy, etc. during announcements.		36.	Theft	- 40
18.	Showing disrespect towards fellow learners	- 2	37.	Dishonesty / cheating during tests or examinations.	- 40
19.	Disruptive in class.	- 5	38.	Vandalism of school and other property.	- 40
20.	Inappropriate behaviour at school functions / on outings.	- 10	39.	Any other serious offences.	- 40
			40.	Dyed/streaked hair. Unacceptable hair styles.	-40

